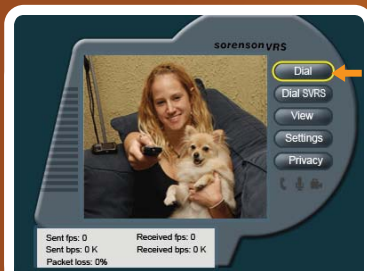
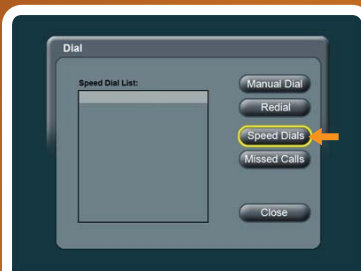


Add ViableVRS.TV to your VP-100®!



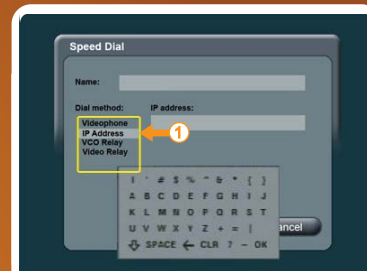
1 Select "Dial"



2 Select "Speed Dial"



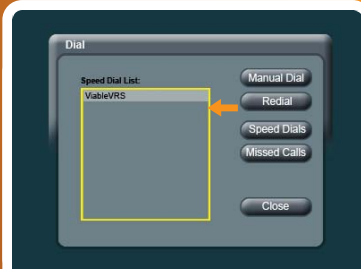
3 Select "Add" to add a new contact



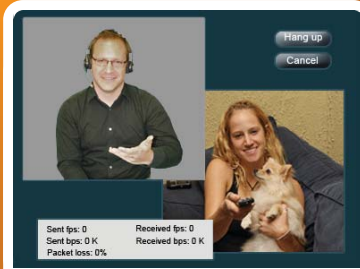
4 Click the Center Round Key on your Remote to make the keyboard appear.



5 Name: ViableVRS
IP Address: ViableVRS.TV



6 Simply click on ViableVRS every time you call VRS!



7 Enjoy unlimited access to quality interpreters!



VIA BLE™

www.viable.net